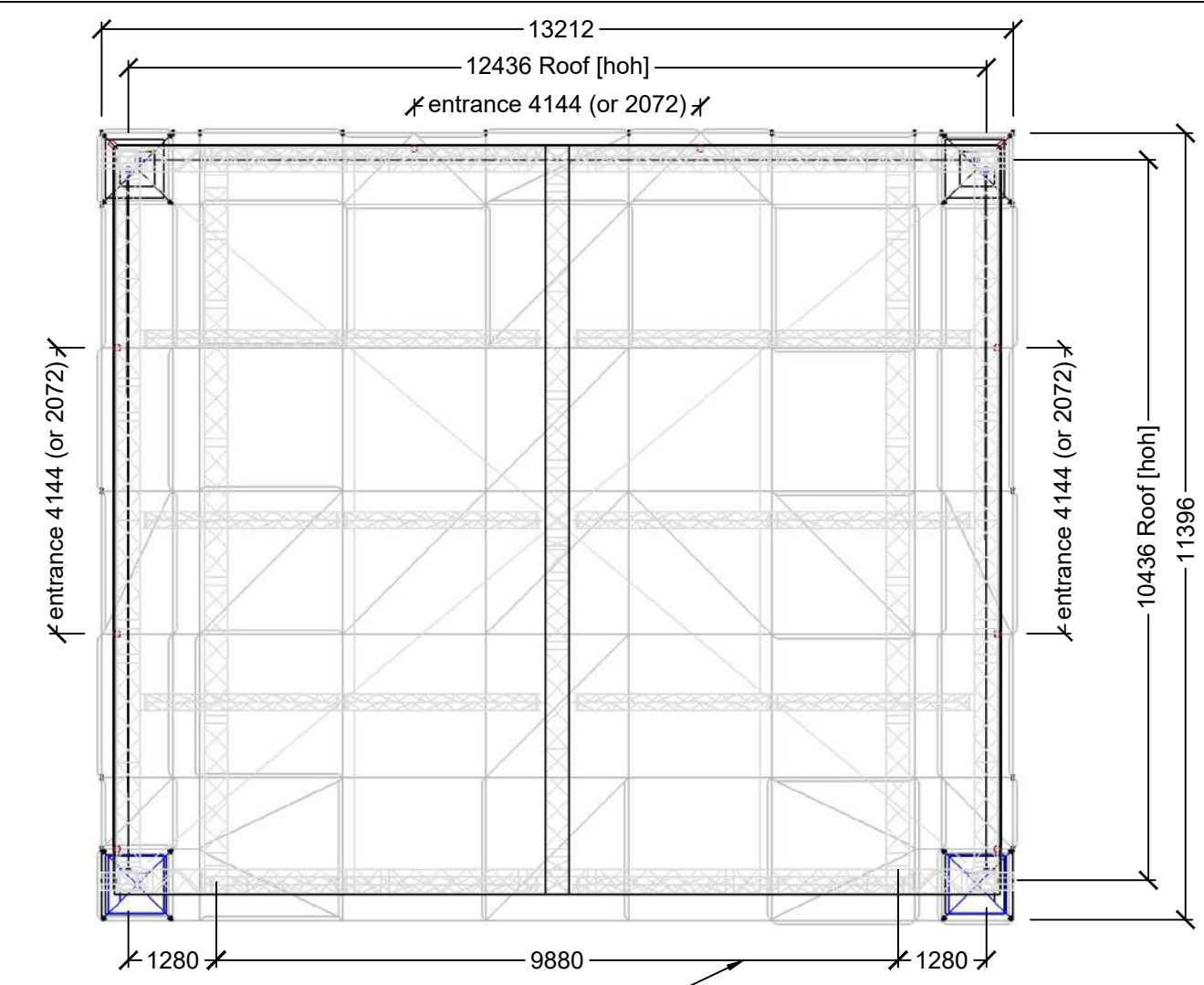
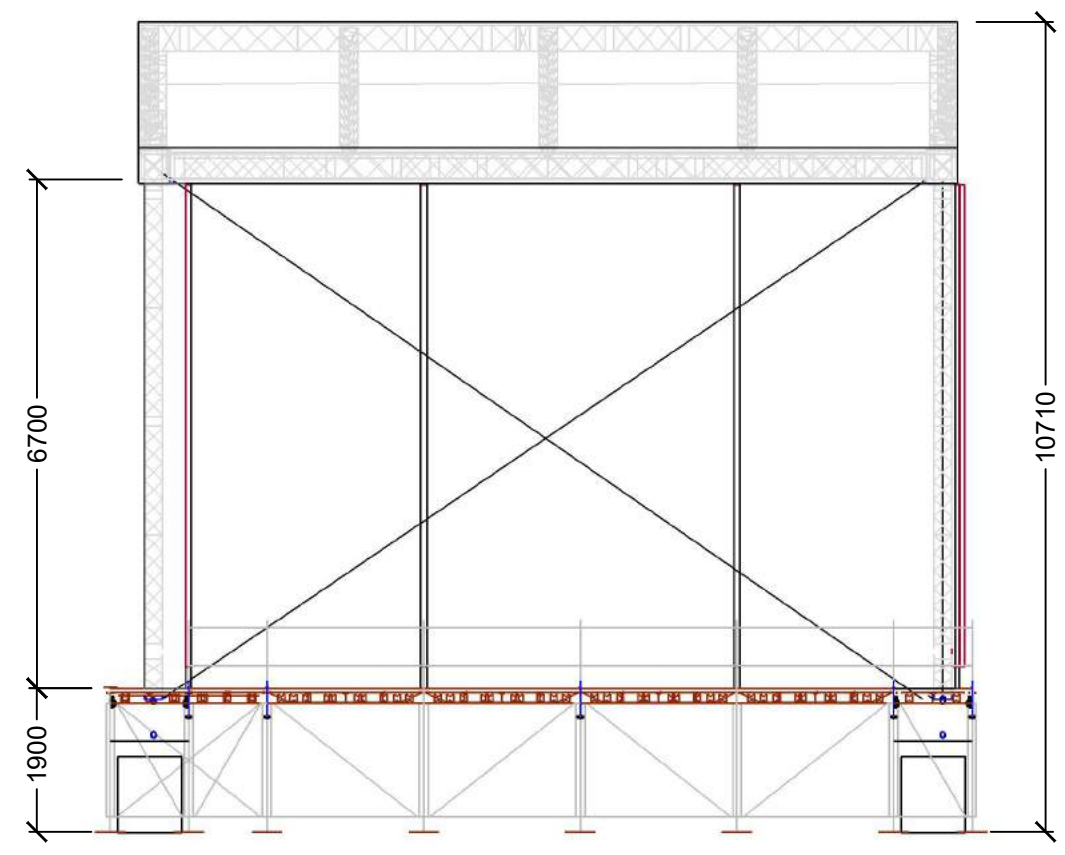
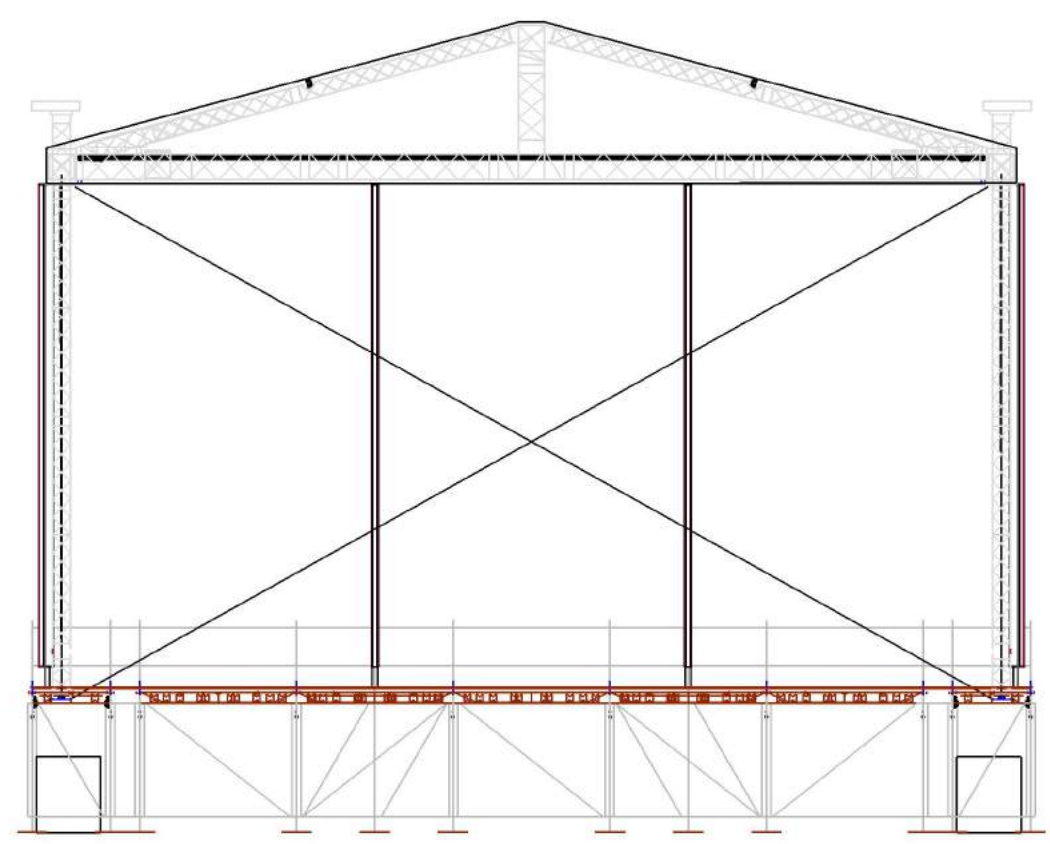
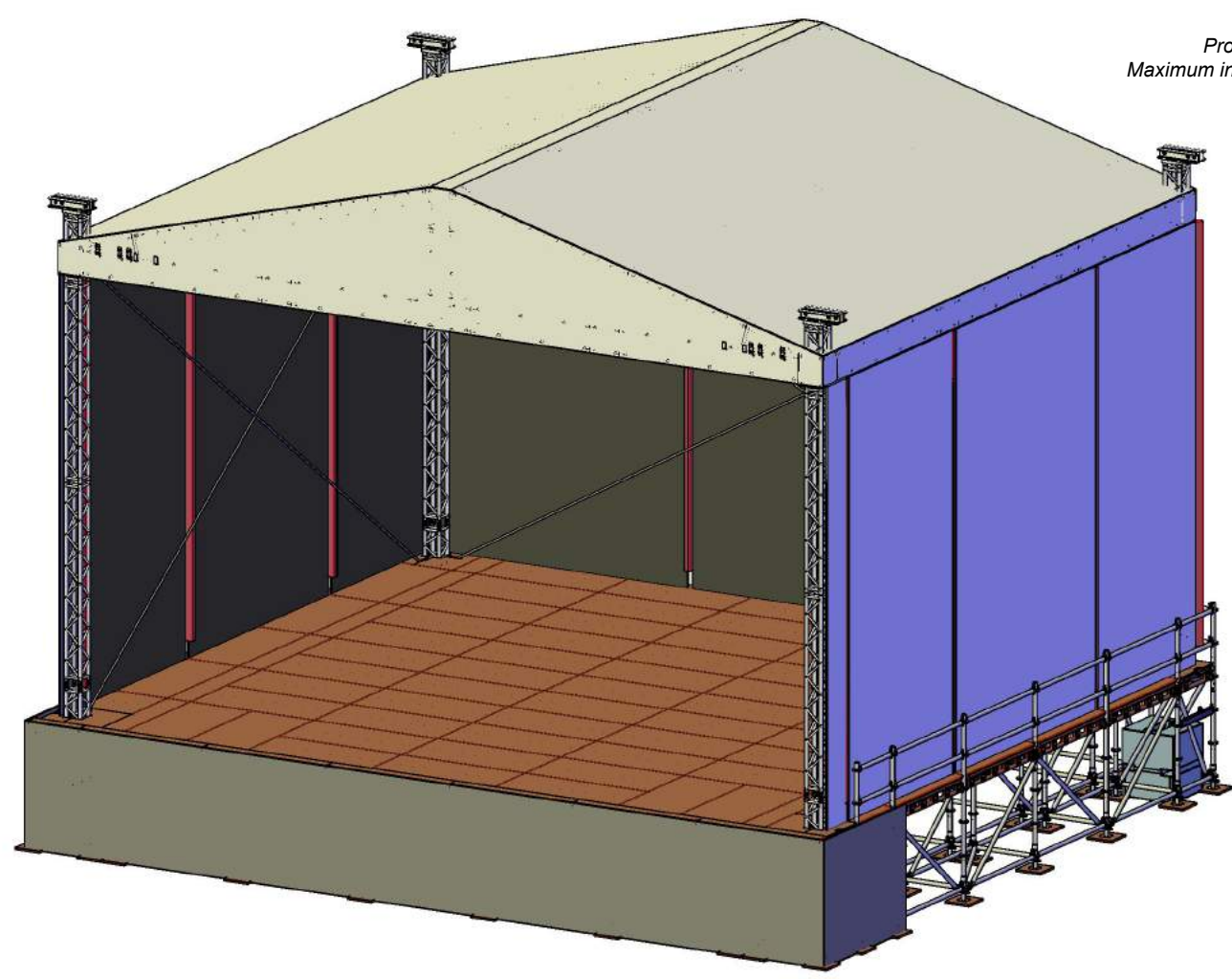


Floor level: minimum 1.35m
 Clearance: 6.70m
 Canopy: Black-Grey
 Production loads: 4.8T (UDL)
 Maximum in-service windload: 20 m/s



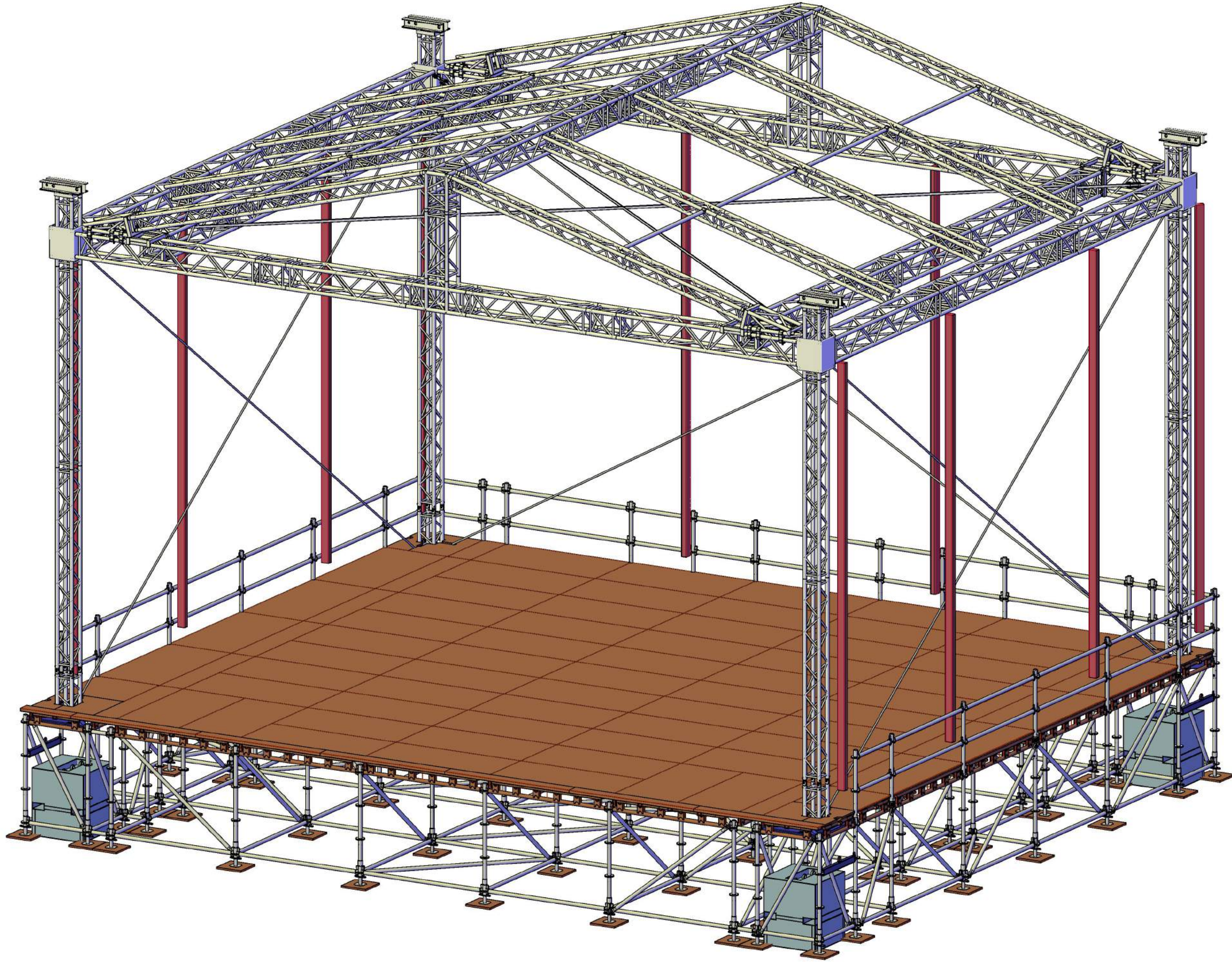
maximum position between pre-rig, position on request



| | |
|--------------------------------------|----------------------------|
| Page name: A3 - Technical Drawing | Date: 17-apr-20 |
| Drawn by: Gigant | Scale: 1:100 |
| Number: --- | Units: mm |
| City / Venue: --- | Phone: +31 (0) 497 51 7771 |
| E-mail: info@gigantinternational.com | |

 MPT





MPT